



Peter Morrison
HelpAge International
Asia Pacific Regional Office

Vision, goals of 2020 strategy

Our **vision** is a world in which all older people can lead dignified, healthy and secure lives. Where all older people can say...



"I have the income I need"



"I am safe and secure, free from discrimination and abuse"

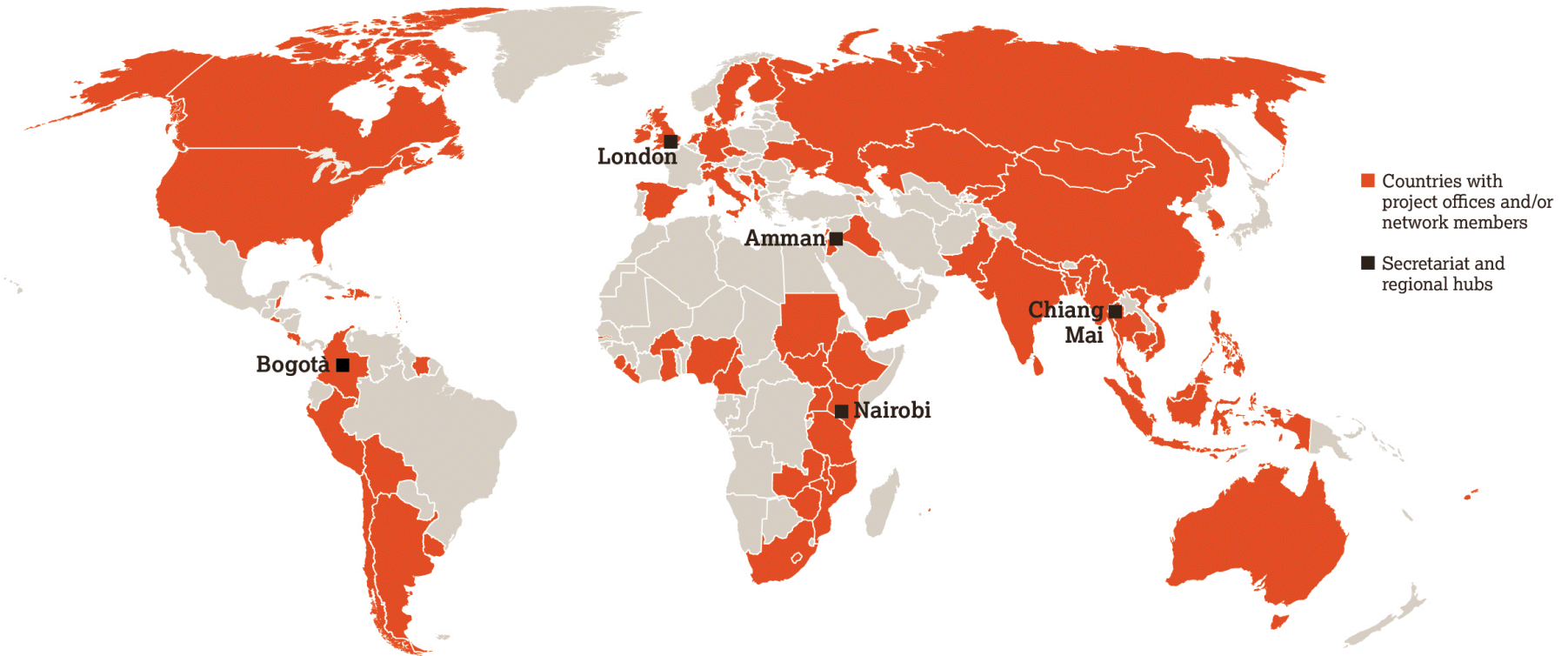


"I enjoy the best possible health and quality of life"



"My voice is heard"

HelpAge and network



5 regional hubs plus country teams

142 members of the HelpAge global network.

HelpAge presence in ASEAN

(as part of Asia Pacific region)

- One regional office (Chiang Mai, Thailand)
- Two country offices in ASEAN
 - Vietnam
 - Myanmar
- Network members in countries without offices
 - Cambodia
 - Indonesia
 - Malaysia
 - Philippines
 - Singapore
 - Thailand

Our main areas of work in ASEAN

1. Social protection
2. Community organisations
3. Health
4. Long-term care
5. Humanitarian response and DRR
6. Everything else

1. Social protection – especially social pensions



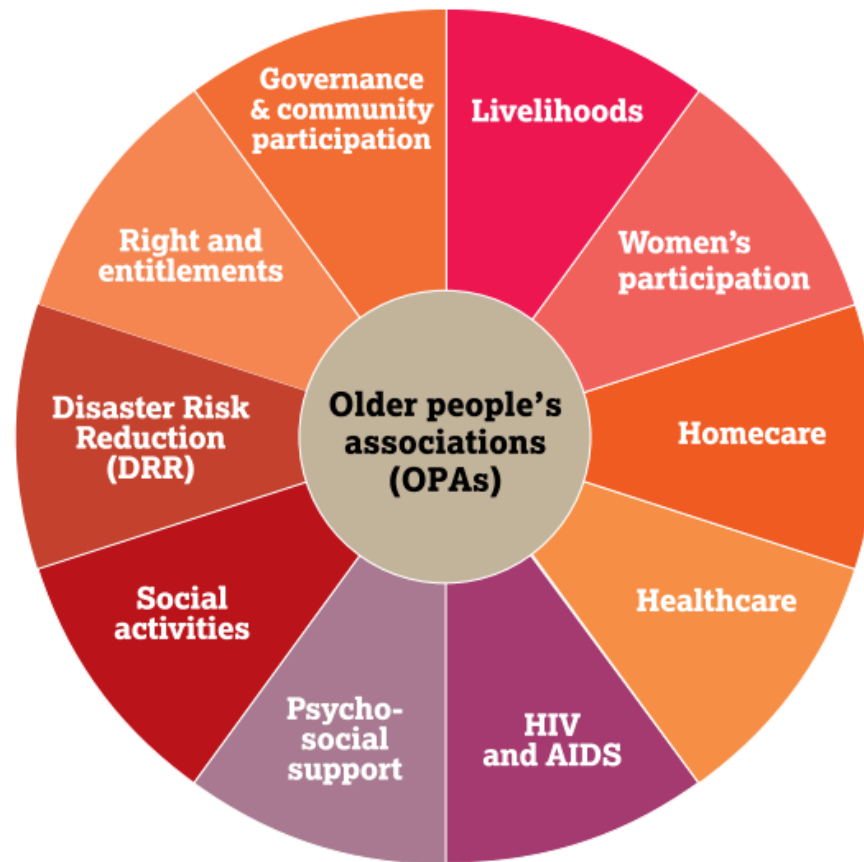
- Regional (including Malaysia course with ILO/ESCAP)
- Myanmar
- Multi-partner project: Philippines and Cambodia

Social protection - Myanmar

- Technical support for Department of Social Welfare
- Piloted cash transfers and electronic cash transfers for older people and people with disabilities
- Advocated for a Government social pension
 - introduced in April 2017 for aged 90 and above
 - reduced to 85 in October 2018, increasing coverage to 180,000 people
- Evidence gathering & knowledge sharing

2. Community organisations

- OPAs



Multifunctional OPAs offer multiple activities depending on community needs

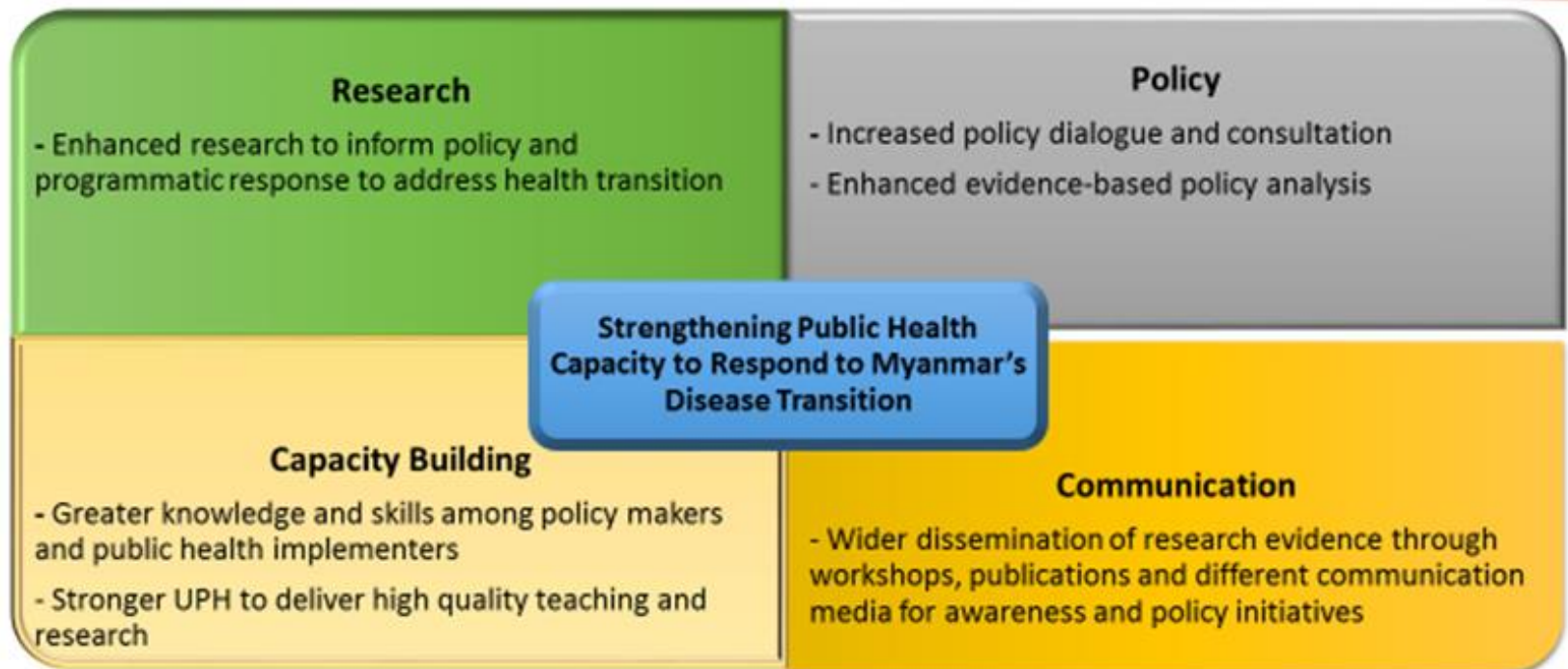
3. Health, including healthy & active ageing and NCDs

- Healthy & active ageing – through OPAs in multiple countries
- NCDs – especially Myanmar

Myanmar:

Strengthening Public Health Capacity to Respond to Myanmar's Disease Transition

- Period: February 2015 – January 2020
- Implementing Partners: University of Public Health, University of Medicine (II), Thammasat University, Thailand



Myanmar: 2 new health-related projects

- *Better Health Programme (pending): 2019-2022*
 - Myanmar lead in multi-country programme. Aims:
 - Strong health workforce equipped to tackle the growing burden of NCDs
 - Strong national leadership implements evidence based NCD policies and programmes
- *Scaling-Up NCD Interventions in South-East Asia (SUNI-SEA): 2019-2023*
 - Myanmar and Vietnam part of research consortium project. Aims:
 - evidence-based approach to health/care for OPAs
 - best practice of community organisation's interventions for health impact

4. Long-term care

- *Strengthening Developing Member Countries capacities in Elderly Care* (ADB) – 2016-2019
 - Thailand, Vietnam, Mongolia, Tonga, Sri Lanka, Indonesia
 - Country diagnostic studies, briefings, support for strategic planning, technical workshops

ADB project - a few findings

- Lack of clarity in concepts and definitions – where are the boundaries of a long-term care system?
- Dependence on self-reports for health and ADL/IADL data
- Research studies often report findings using different age groups
- Most literature is from OECD countries
- Institutional rivalries in execution

5. Humanitarian response and disaster risk reduction



6. Everything else

- Sharing and exchange
- Evidence building
- Communications
- Campaigns
- Events

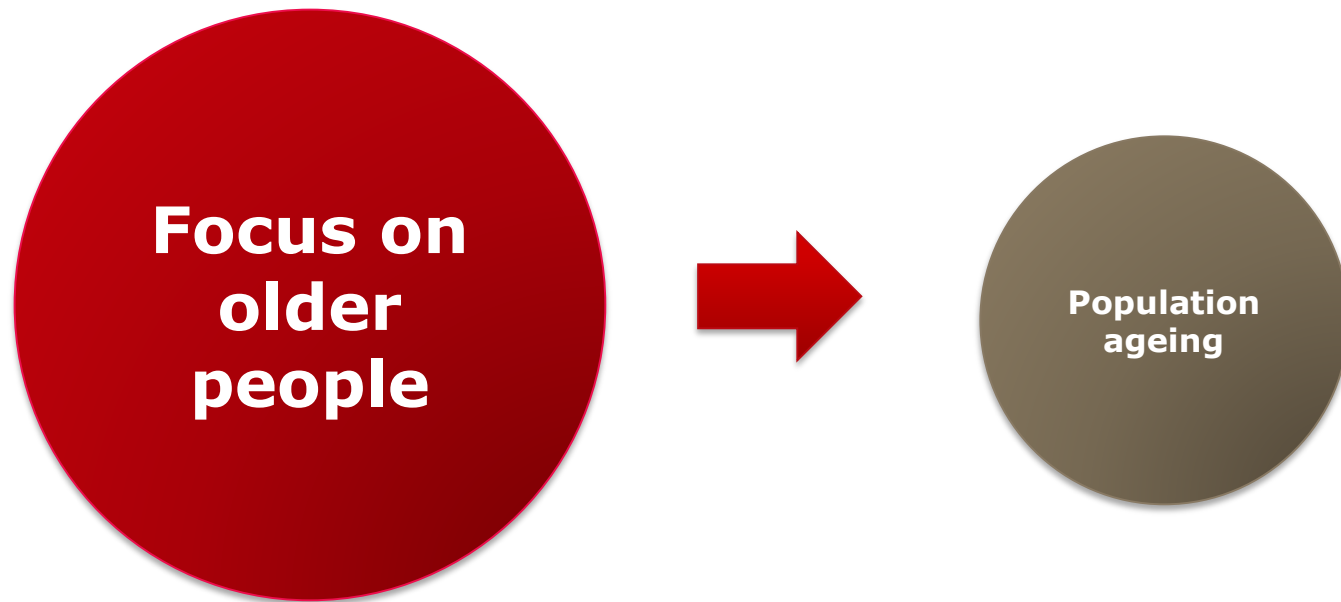
Regional conferences



Sharing knowledge & evidence



Widening perspectives





Thank you

For more details: www.helppage.org